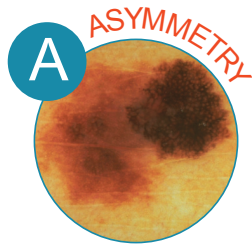


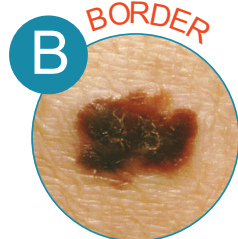
# The ABCDEs of Melanoma

## What to look for...

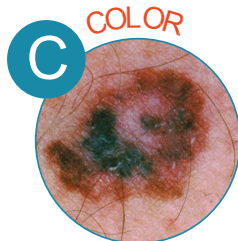
Skin cancer can develop anywhere on the skin and is one of the few cancers you can usually see with your own eyes. Ask someone for help when checking your skin, especially in hard to see places. If you notice a mole that is different from others, or that changes, itches or bleeds (even if it is small), you should see a dermatologist.



One half unlike the other half.



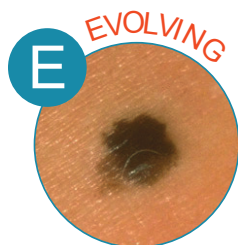
Irregular, scalloped or poorly defined borders.



Varied from one area to another; shades of tan and brown, black; sometimes red, white, or blue.



While melanomas are usually greater than 6mm (the size of a pencil eraser) when diagnosed, they can be smaller. See ruler below for a guide.



A mole or skin lesion that looks different from the rest or is changing in size, shape or color.

Example:

